



COMMUNITY UNIT SCHOOL DISTRICT 200

# District 200 Enrollment Update

## April 10, 2013



Inspiring in Everyone a Passion to Excel

# Intent of Enrollment Study

## Address Board Goals:

- **District Goal #3:** We will achieve long-term financial stability by managing District resources prudently
- **Superintendent Goal #4:** Manage resources to achieve the adopted budget while maintaining a positive impact on student learning

## Expected Milestones for 2012-2013:

- Develop a process to review enrollment changes annually based on reliable demographic data and engaging a broad range of community stakeholders



# Benefits of Enrollment Study

## Facilitates Planning for:

- Building or space needs
- Staffing needs
- Financial needs



# Enrollment Report

Prepared by John D. Kasarda, Ph.D.  
University of North Carolina  
Consulting Demographer

Completed Prior D200 Reports



# Kasarda Report

- Updates 2008 demographic study
- Review of population and housing dynamics
- Analysis of recent enrollment patterns
- Enrollment projections



# District Background

## Current Enrollment is Approximately 13,240 Students

- Changing Demographic
  - \* Growing ELL population
  - \* 32% racial/ethnic minorities
  - \* 15.5% Hispanic (up 5.2% from 2002)



# Enrollment Trends

## Kindergarten Enrollment

- Somewhat volatile last 5 years
- 2012-13 increased to 973 students  
Eleven (11) year high
- Anomaly?
- Preliminary Enrollment



# Enrollment Trends

- Elementary enrollment declined in all but one year since 1997-98
- Middle School enrollment declined over the past decade with a slight increase in 2012-13
- High School enrollment peaked in 2005-06, declining thereafter





# Factors of Enrollment Change

- Graduating class versus kindergarten enrollment
- Net migration and retention of students
- Change in special education



# Interrelated Factors That Play a Roll in Projections

## Future Fertility Rates & Resulting Family Size

- \* Little change in middle income suburban families in the next five years
- \* Impact of Hispanic families
- \* Decline in births 1999-2009



# Interrelated Factors That Play a Roll in Projections

## In-Migration of Students-Housing

- Turnover of existing housing
- Housing development
  - \*Mostly built out
  - \*New housing-Legends, Amberwood, Silver Glen, Northridge
  - \*Teardowns and rebuilds-Hawthorne, Lowell, Longfellow, Washington & Emerson, Lincoln, Madison and Whittier.



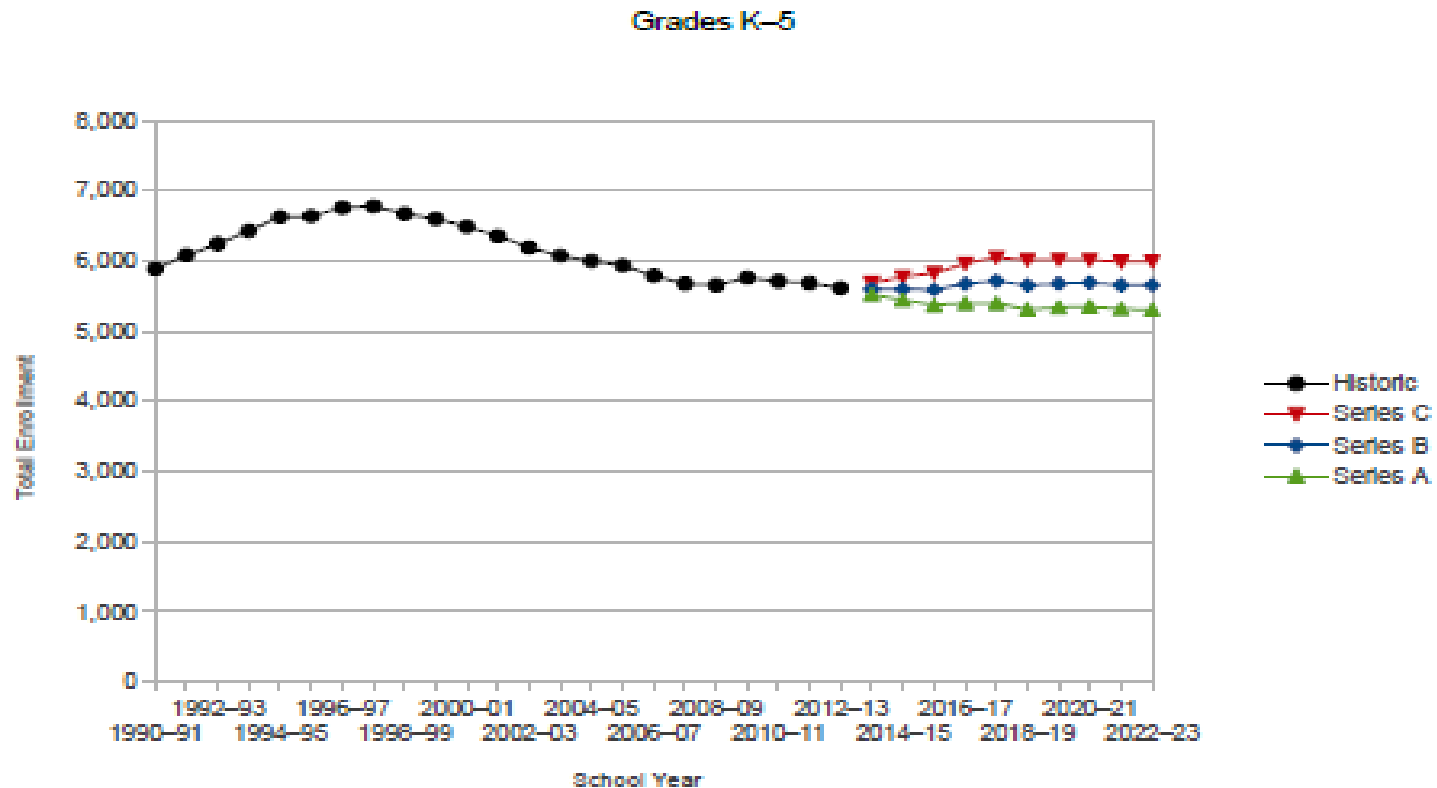
# Projections

## Assumption Series:

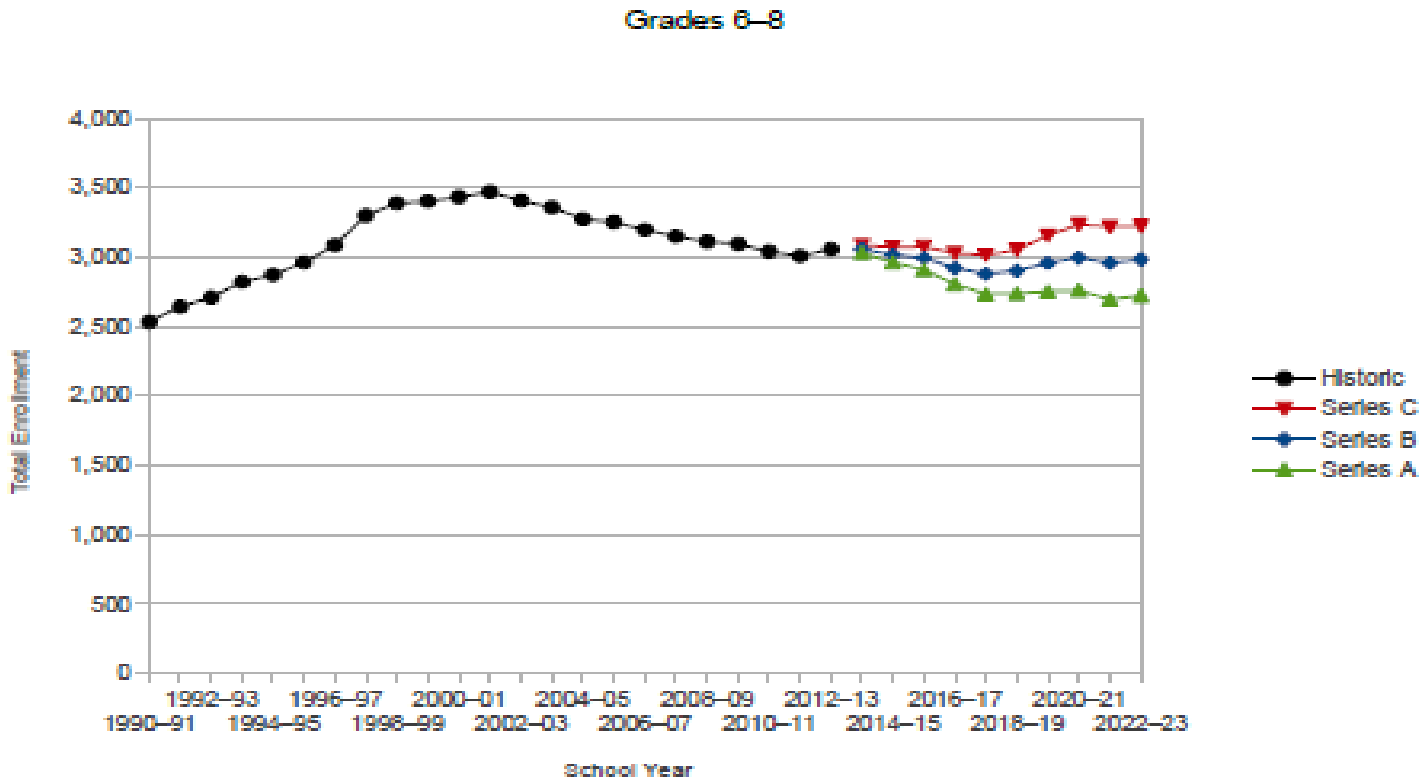
- **Series A:** Absolute minimum students anticipated
- **Series B:** Most likely number of students expected
- **Series C:** Maximum number of students possibly foreseen



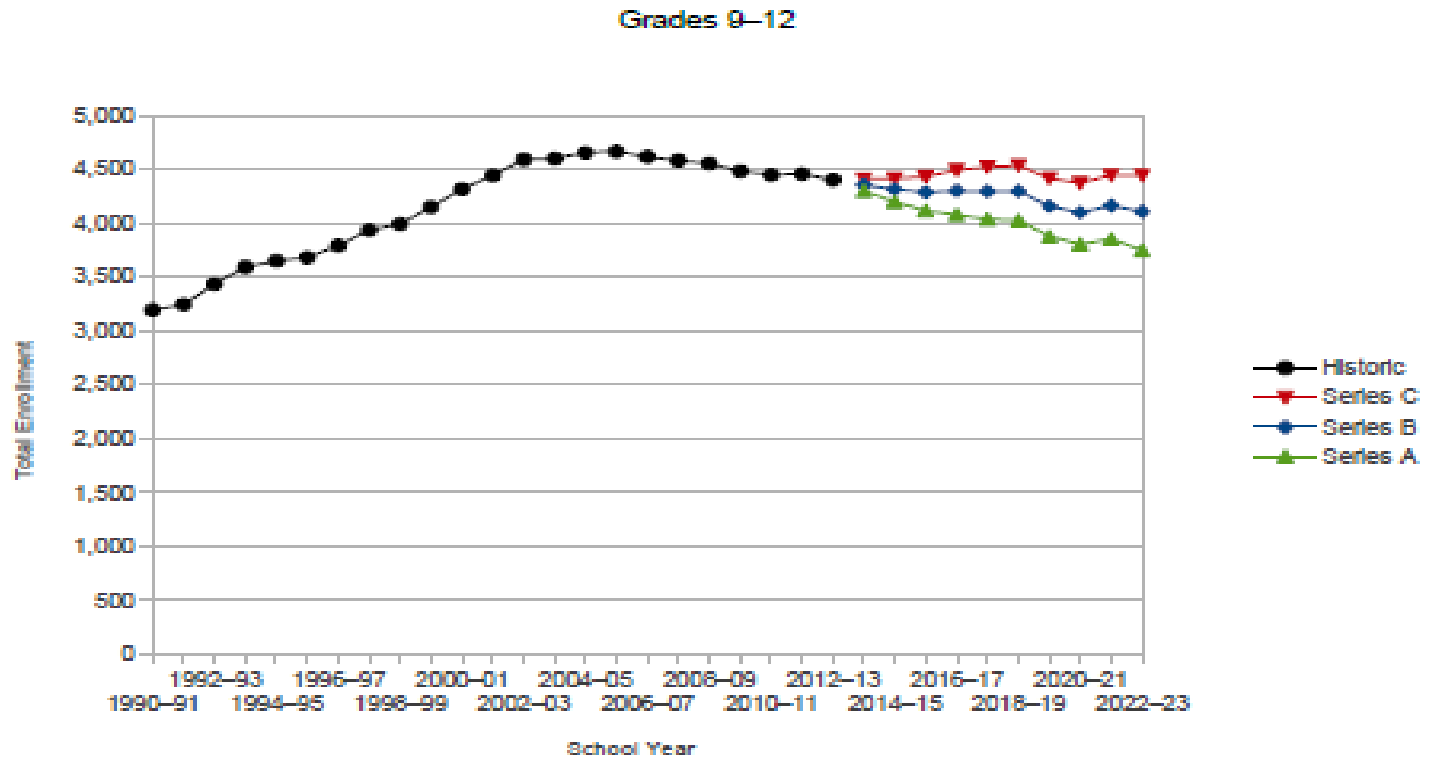
# District 200 Historical Total Enrollment 1990-91 to 2012-13 and Projected Total Enrollment 2013-14 to 2022-23 under Series A, Series B and Series C Assumptions



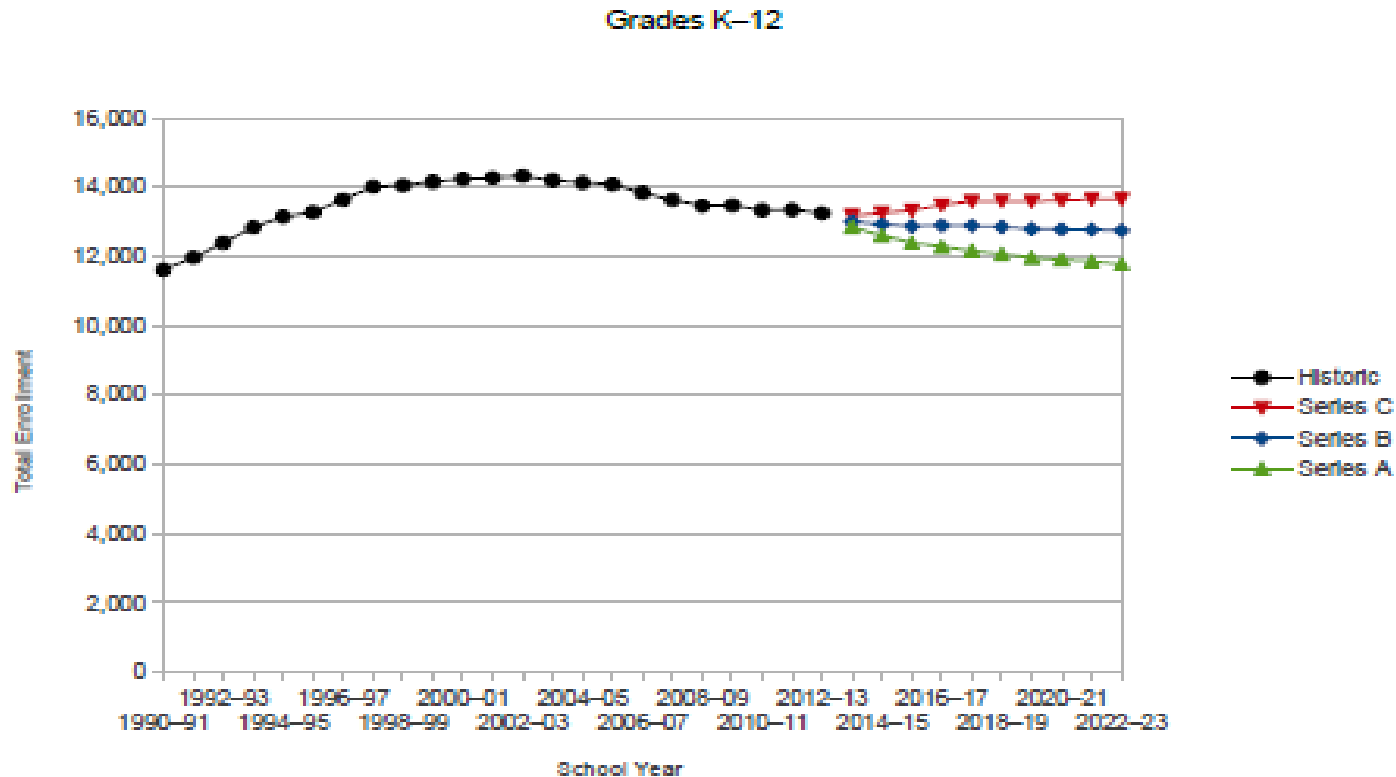
# District 200 Historical Total Enrollment 1990-91 to 2012-13 and Projected Total Enrollment 2013-14 to 2022-23 under Series A, Series B and Series C Assumptions



# District 200 Historical Total Enrollment 1990-91 to 2012-13 and Projected Total Enrollment 2013-13 to 2022-23 under Series A, Series B and Series C Assumptions



# District 200 Historical Total Enrollment 1990-91 to 2012-13 and Projected Total Enrollment 2013-13 to 2022-23 under Series A, Series B and Series C Assumptions





# Bottom Line

“District 200 is looking at just around 12,900 students in the aggregate ten years out compared with 13,243 students this year”.

Kasarda Report-page 44



# Moving Forward

- Enrollment Advisory Committee
- Chaired by Assistant Superintendent for Business Operations & Director of Public Relations
- Stakeholders include: Staff, parents and community members
- Report and provide updates to the Superintendent & Board of Education



Questions?

