



COMMUNITY UNIT SCHOOL DISTRICT 200

Enrollment Committee Report

November 11, 2015



Inspiring in Everyone a Passion to Excel

Enrollment Committee

- Purpose - to review enrollment annually based on reliable demographic data and engaging a broad range of community stakeholders.
- Committee Members (see memo)



Enrollment Committee

- **Met on September 21 & October 26 to:**
 - Review the 2014 Committee Report and results
 - Review the 2013 Kasarda Report and enrollment projections
 - Evaluate actual student enrollment data and trends
 - Understand building utilization through facility analysis diagrams
 - Review enrollment and classroom utilization at Jefferson Early Childhood Center
 - Review feedback provided by local realtors
 - Discuss and identify any recommendations



2014 Committee Recommendation

Review the enrollment strategy for Covered Bridges Apartment → resulted in a successful boundary adjustment

Covered Bridges Enrollment

School	2014-15	2015-16
Pleasant Hill	~100	98
Hawthorne	~50	52



2013 Kasarda Enrollment Report

- Prepared by John D. Kasarda, Ph.D. from University of North Carolina
- Updated 2008 demographic study
- Review of population and housing dynamics
- Analysis of recent enrollment patterns
- Enrollment projections



Projections

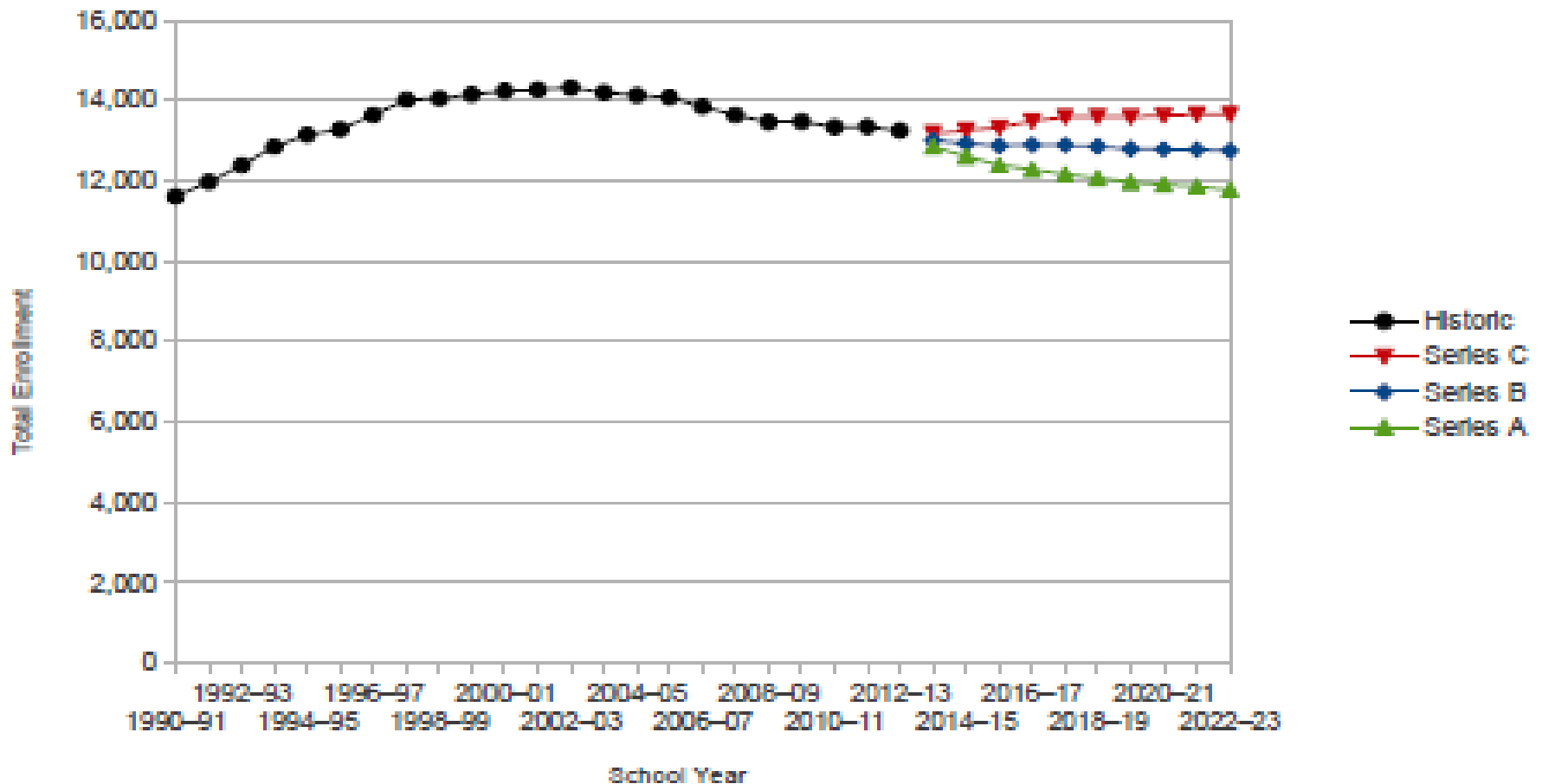
Assumption Series:

- **Series A:** Less students than anticipated
- **Series B:** Anticipated number of students
- **Series C:** Greater than anticipated number of students



District 200 Historical Total Enrollment 1990-91 to 2012-13 and Projected Total Enrollment 2013-14 to 2022-23 under Series A, Series B and Series C Assumptions

Grades K-12



District Overview

Current Enrollment is 13,113 Students *

Includes all Jefferson (234), Transition (38), Out-placed students (110), Head Start (34), and Preschool Expansion (37)

67% White

17% Hispanic

6% Black

6% Asian

4% Multiracial

Number of Languages

Spoken Among Students: 68

26% Low Income

14% With Disabilities

8% English Learners

**These figures represent fall enrollment at the time of committee meetings.*



Elementary Enrollment*

School	2014-15	2015-16	Series A	Series B	Series C
Bower	501	500	467	515	553
Emerson	327	303	277	320	362
Hawthorne	290	281	295	337	377
Johnson	457	474	372	411	450
Lincoln	507	497	473	509	545
Longfellow	387	403	376	412	448
Lowell	409	381	379	415	451
Madison	441	448	349	385	424
Pleasant Hill	660	636	534	576	621
Sandburg	391	361	335	374	413
Washington	423	430	397	437	476
Whittier	404	401	318	357	396
Wiesbrook	518	490	484	527	568
Total	5,715	5,605			

**These figures represent fall enrollment at the time of committee meetings.*

MS & HS Enrollment*

School	2014-15	2015-16	Series A	Series B	Series C
Edison	676	683	623	673	724
Franklin	732	702	673	730	790
Hubble	837	762	725	797	857
Monroe	837	775	721	797	855
Total MS	3,082	2,922			
WN	2,231	2,094	2,109	2,223	2,332
WWS	2,134	2,039	1,958	2,067	2,161
Total HS	4,365	4,133			

**These figures represent fall enrollment at the time of committee meetings.*

Enrollment Trends - Kindergarten

Somewhat unpredictable in last several years

- 2009-10 968 students
- 2010-11 839 students
- 2011-12 885 students
- 2012-13 973 students (11 year high)
- 2013-14 849 students
- 2014-15 869 students
- 2015-16 874 students



Enrollment Trends

Fall Enrollment* *(Includes Jefferson enrollment)*

– 2014-15	13,369
– 2015-16	13,113

- Since 1997-98, elementary enrollment declined in all but two years (09-10/13-14)

**These figures represent fall enrollment at the time of committee meetings.*



Factors of Enrollment Change

- Graduating 2015 class (1,059) versus kindergarten (874) enrollment
- Net migration and retention of students
- Special Education Population
 - District 200 14.3%
 - Naperville 203 9.6%
 - Indian Prairie 204 10.6%



Realtor Feedback

- **October 21st – Hosted 1st Annual Realtor Breakfast**
- **Feedback:**
 - Sales are a bit slow right now
 - Empty nesters are selling and families with young children, or families who plan to have children, are moving in
 - First-time homebuyers are buying within their means
 - Empty nesters who are down-sizing are choosing to purchase within the community



Housing Developments

- Silverwood Glen – 43 homes (P Hill, Monroe, WN) – complete
- Fisher Farms – 71 homes (P Hill, Monroe, WN) – almost complete
- Legends – 64 homes (Wiesbrook, Hubble, WWS) – almost complete
- Amberwood – 33 homes (Wiesbrook, Hubble, WWS) – in progress
- Northridge – 12 homes (Sandburg, Monroe, WN) – in progress
- Herrick Woods – 74 units (Bower, Hubble, WWS) – in progress
- North Woods of Wheaton – 13 homes (Washington, Franklin, WN) – in progress
- Woodlawn Place – 21 homes (Sandburg, Monroe, WN) – in progress



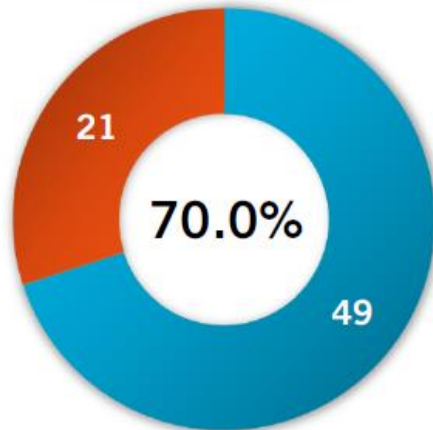
Capacity Analysis

- Questions the committee discussed based on data:
 - *Do we need all of the schools we have? - yes*
 - *Do we have enough space in the schools we have? – yes except for one*
- P+W prepared an elementary capacity analysis. Summary:
 - Districtwide Elementary Classroom Capacity Utilization: 75.3% (appropriate)
 - 232 of 283 elementary classrooms are core classrooms
 - Districtwide elementary average class size: 21.6 (includes special education)
- Full analysis in green folders

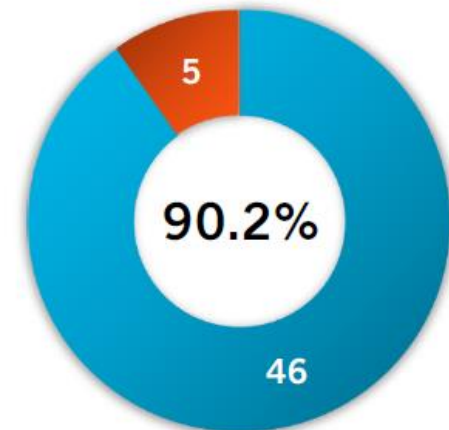


Capacity Analysis: Jefferson

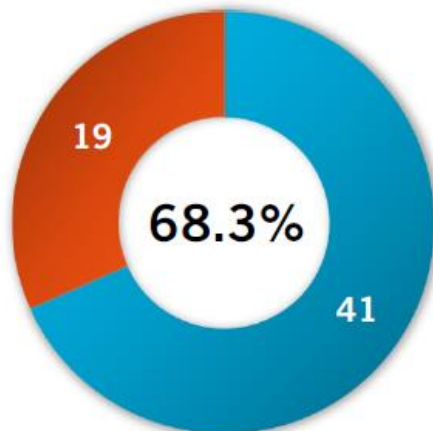
Classroom Capacity
AM Instructional



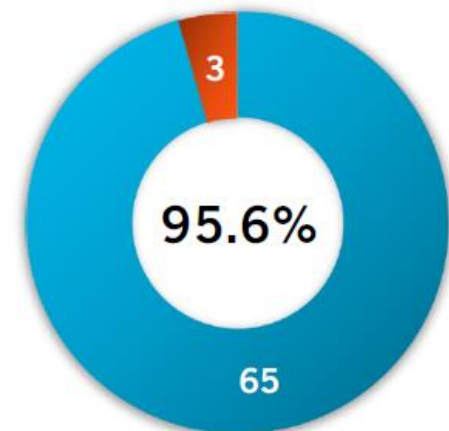
Classroom Capacity
AM Blended



Classroom Capacity
PM Instructional



Classroom Capacity
PM Blended



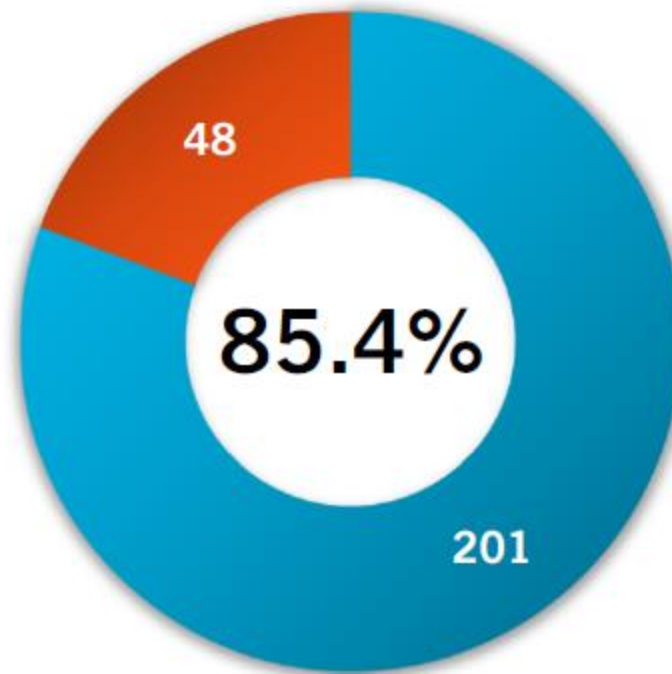
Note

Five additional classrooms housed at other District Facilities.

Jefferson Early Learning Center
Building Utilization Analysis

Capacity Analysis: Jefferson

Overall Utilization*



*includes Preschool Expansion Grant



Early Childhood Programs



District 200 Early Childhood Services



Jefferson Early Childhood Center

Instructional
Classes

Transition
Program of
Instruction for
Instructional
Class

Bilingual
Instructional
Classes

Blended
Classes

Transition
Program of
Instruction for
Blended Classes

Bilingual
Blended
Classes

Speech Services

Preschool Expansion Grant Classes

Madison Elementary

Phonology Services

Speech Services

Whittier Elementary

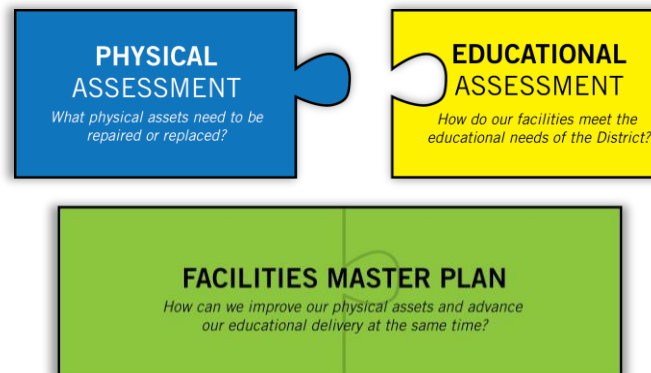
Instructional Classes

Johnson Elementary

Head Start Classes

2015 Committee Recommendation

The Board is asked to review the building utilization of Jefferson and all Early Childhood Program locations and pay special attention to these programs as part of their Facility Master Plan.



Questions?

