



COMMUNITY UNIT SCHOOL DISTRICT 200

District 200 Enrollment & Building Utilization Update July 12, 2017



Inspiring in Everyone a Passion to Excel

2017 Kasarda Enrollment Report

- Prepared by John D. Kasarda, Ph.D. from University of North Carolina
- Updated 2013 demographic study
- Review of population and housing dynamics
- Analysis of recent enrollment patterns
- Enrollment projections
- Early Learning difficult to project-flat trend



District Background

2016-17 Enrollment was 12,788 Students

- Changing Demographic Profile

	2000	2016
Asian, African American, Hispanic, Multi Racial	14.7%	35.1%
Hispanic	5.2%	17.3%
English Learners	3.6%	9.4%
Low-Income	8.5%	26%



District 200 Enrollment Trends

Key Points

- Mirror housing trends
- Since 1997-98, elementary enrollment declined in all but two years (09-10/13-14)
- Middle School has declined over the past 15 years
- High School has declined over the past 11 years
- Special programming has increased over the same time period in which enrollment has declined



Factors of Enrollment Change

- Graduating 2016 class (1,017) versus 2016-17 kindergarten (878) enrollment
- Net migration and retention of students (-13 from 2015 to 2016)
- Special Education Population
 - District 200 15.4%
 - Naperville 203 11.0%
 - Indian Prairie 204 11.1%



Kindergarten Enrollment

Five-year look:

- 2012-13 973 students (highest since 2001-2)
- 2013-14 903 students
- 2014-15 872 students
- 2015-16 873 students
- 2016-17 878 students



Interrelated Factors in Projections

Future Fertility Rates & Resulting Family Size

- * Little change in middle income suburban families in the next five years
- * Impact of Special Population Fertility Rates



Interrelated Factors in Projections

In-Migration of Students-Housing

- Turnover of existing housing
- Completed, Current or Planned housing developments
 - Amberwood – 20 remaining lots (Wiesbrook, Hubble, WWS)
 - Silverwood Glen – completed (P Hill, Monroe, WN)
 - Fisher Farms/Klein Creek 21 lots (P Hill, Monroe, WN)
 - Northridge 3 remaining (Sandburg, Monroe, WN)
 - Legends– 20 remaining lots (Wiesbrook, Hubble, WWS)
 - Herrick Woods – 10 remaining lots (Bower, Hubble, WWS)
 - North Woods of Wheaton – 1 remaining lot (Washington, Franklin, WN)
 - Woodlawn Place – 3 remaining lots (Sandburg, Monroe, WN)
 - Loretto-46 Homes (Whittier, Edison, WWS)
 - Civic Center-24 Homes (Bower, Hubble, WWS)
- Tear-down and rebuilds (Estimate: 12)



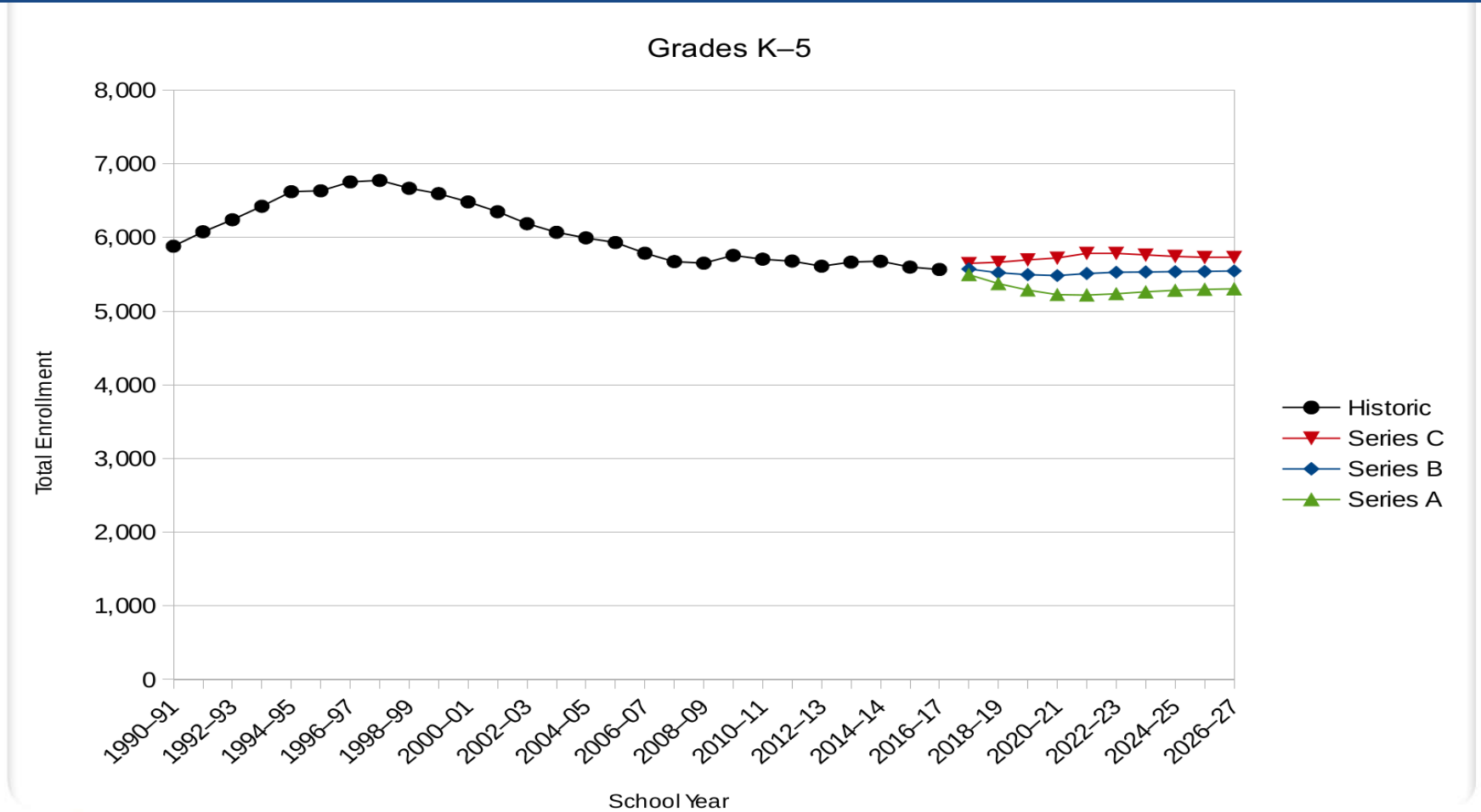
Projections

Assumption Series:

- **Series A:** Less students than anticipated
- **Series B:** Anticipated number of students
- **Series C:** Greater than anticipated number of students



District 200 Historical Total Enrollment 1990–91 to 2016–17 and Projected Total Enrollment 2017–18 to 2026–27 under Series A, Series B and Series C Assumptions Grades K–5



Elementary Classroom Utilization- CORE

Schools	Full Size Rooms	General Education Rooms	Special Education Rooms	Full Size Art/Music (2)	Core Total	% Classrooms Core Instruction
Bower	29	17	7	2	26	90
Emerson	20	13	2	2	17	85
Hawthorne	14	13	0	1	14	100
Johnson	28	20	2	2	24	86
Lincoln	25	20	1	2	23	92
Longfellow	20	16	0	2	18	90
Lowell	24	17	2	2	21	88
Madison	26	19	2*	2	23	88
Pleasant Hill	30	25	0	2	27	90
Sandburg	23	17	0	2	19	82
Washington	21	17	1	1	19	90
Whittier	25	17	2*	2	21	84
Wiesbrook	24	19	1	2	22	92
Summary	309	230	20	24	274	
* One Classroom would be available with solution to Early Learning Center						

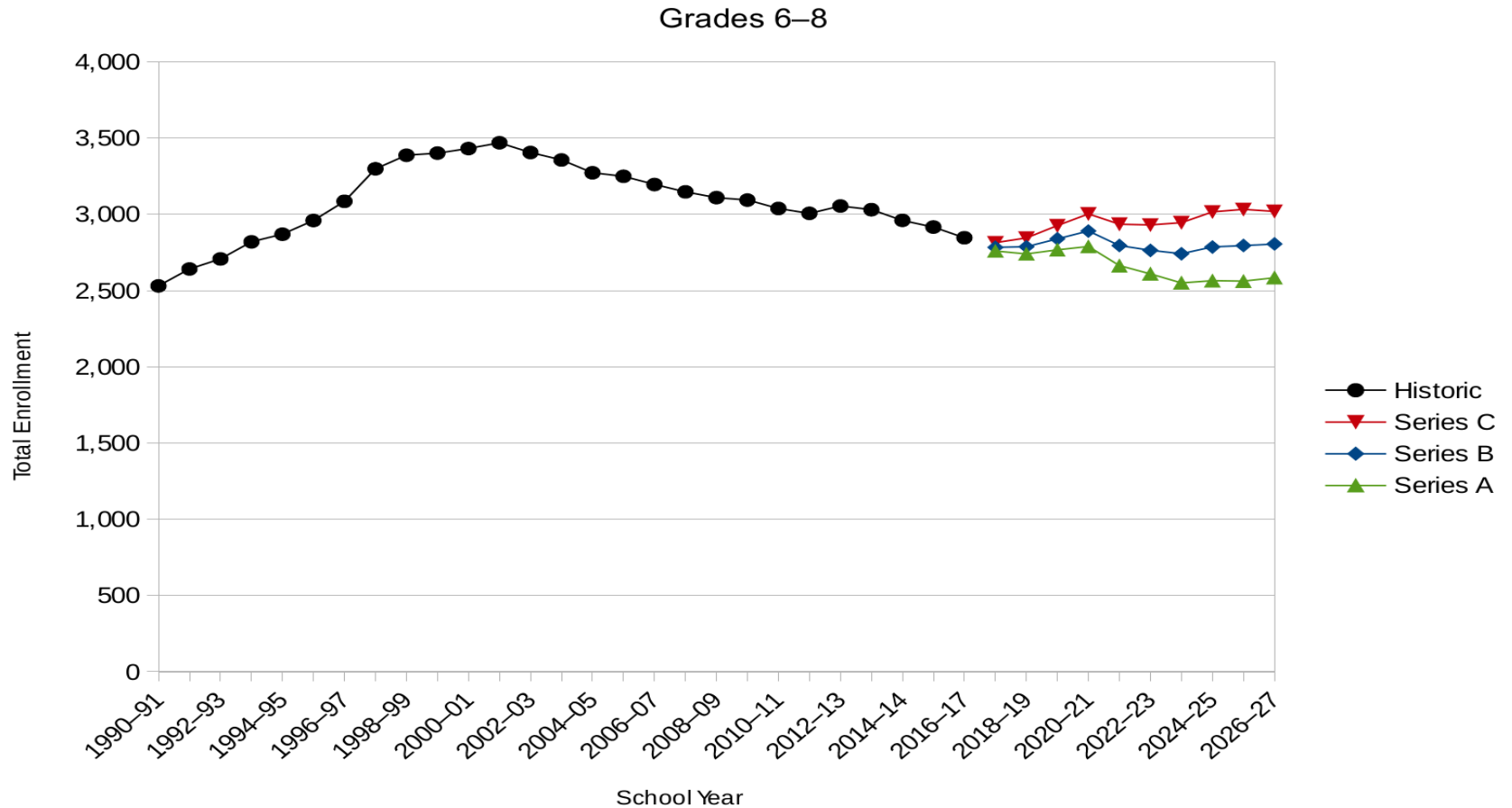


Elementary Classroom Utilization - plus small group space

Schools	Full Size PACE	Full Size Resource	Full Size EL	Full Size	Full Size Rooms
	Rooms	Rooms	Rooms	Reading Teachers	Could Be Available
Bower	0	1	1	1	0
Emerson	0	1	1	1	0
Hawthorne	0	0	0	0	0
Johnson	0	1	1	2	0
Lincoln	0	0	1	1	0
Longfellow	1	0	0	0	1
Lowell	1	0	1	1	0
Madison	1	1	1	0	0
Pleasant Hill	0	0.5	1	1.5	0
Sandburg	1	1	1	1	0
Washington	0	1	1	0	0
Whittier	1	2	1	0	1
Wiesbrook	0.5	1	0.5	0	0
Summary	5.5	9.5	10.5	8.5	2



District 200 Historical Total Enrollment 1990–91 to 2016–17 and Projected Total Enrollment 2017–18 to 2026–27 under Series A, Series B and Series C Assumptions Grades 6–8

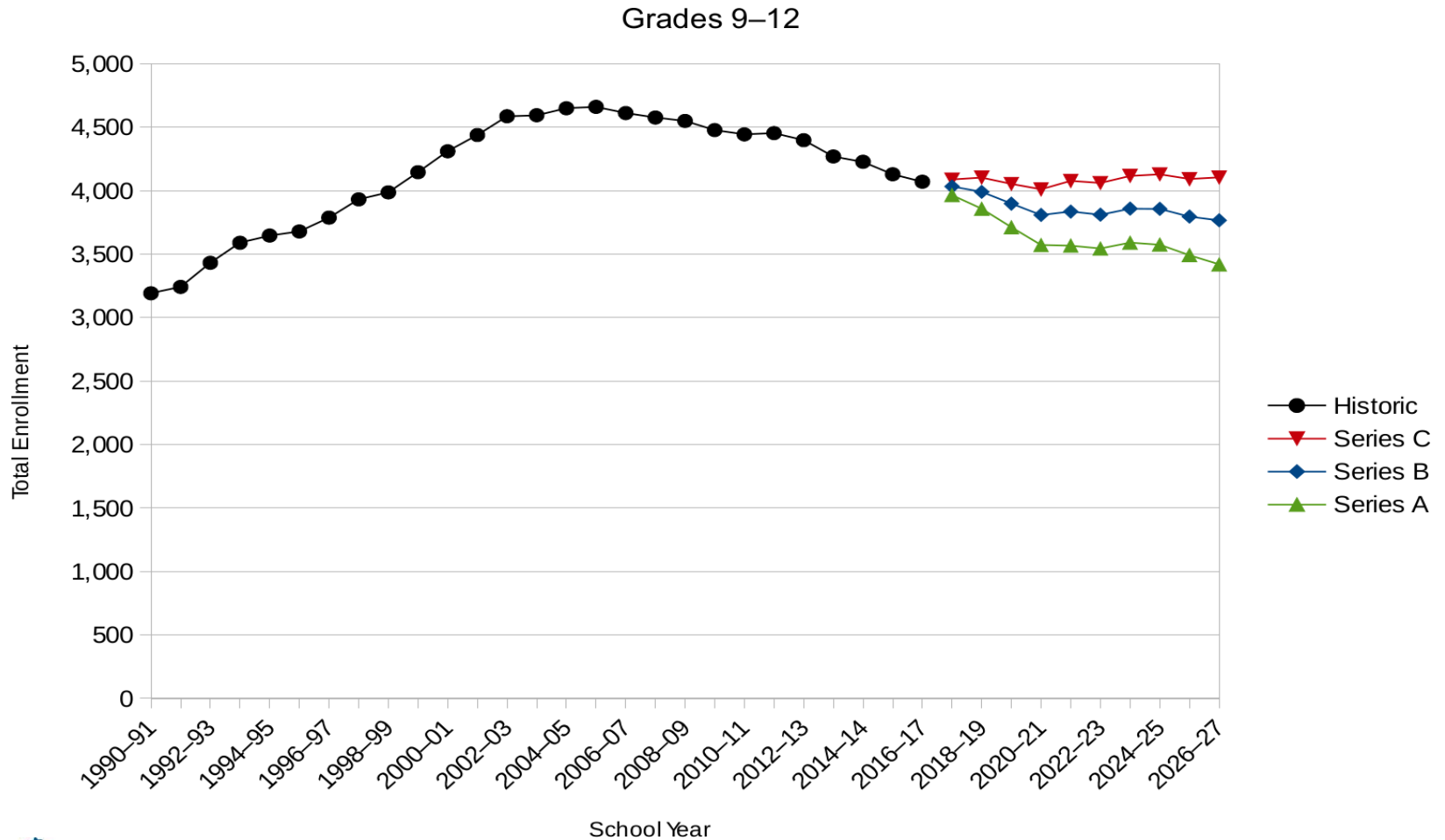


Middle School Utilization-85%

- **Edison Utilization: 815 Students**
 - 2016-17 Enrollment of 637 Students (66%)
- **Franklin Utilization: 702 Students**
 - 2016-17 Enrollment of 701 Students (85%)
- **Hubble Utilization: 926 Students**
 - 2016-17 Enrollment of 740 Students (68%)
- **Monroe Utilization: 982 Students**
 - 2016-17 Enrollment of 769 Students (67%)



District 200 Historical Total Enrollment 1990–91 to 2016–17 and Projected Total Enrollment 2017–18 to 2026–27 under Series A, Series B and Series C Assumptions Grades 9–12

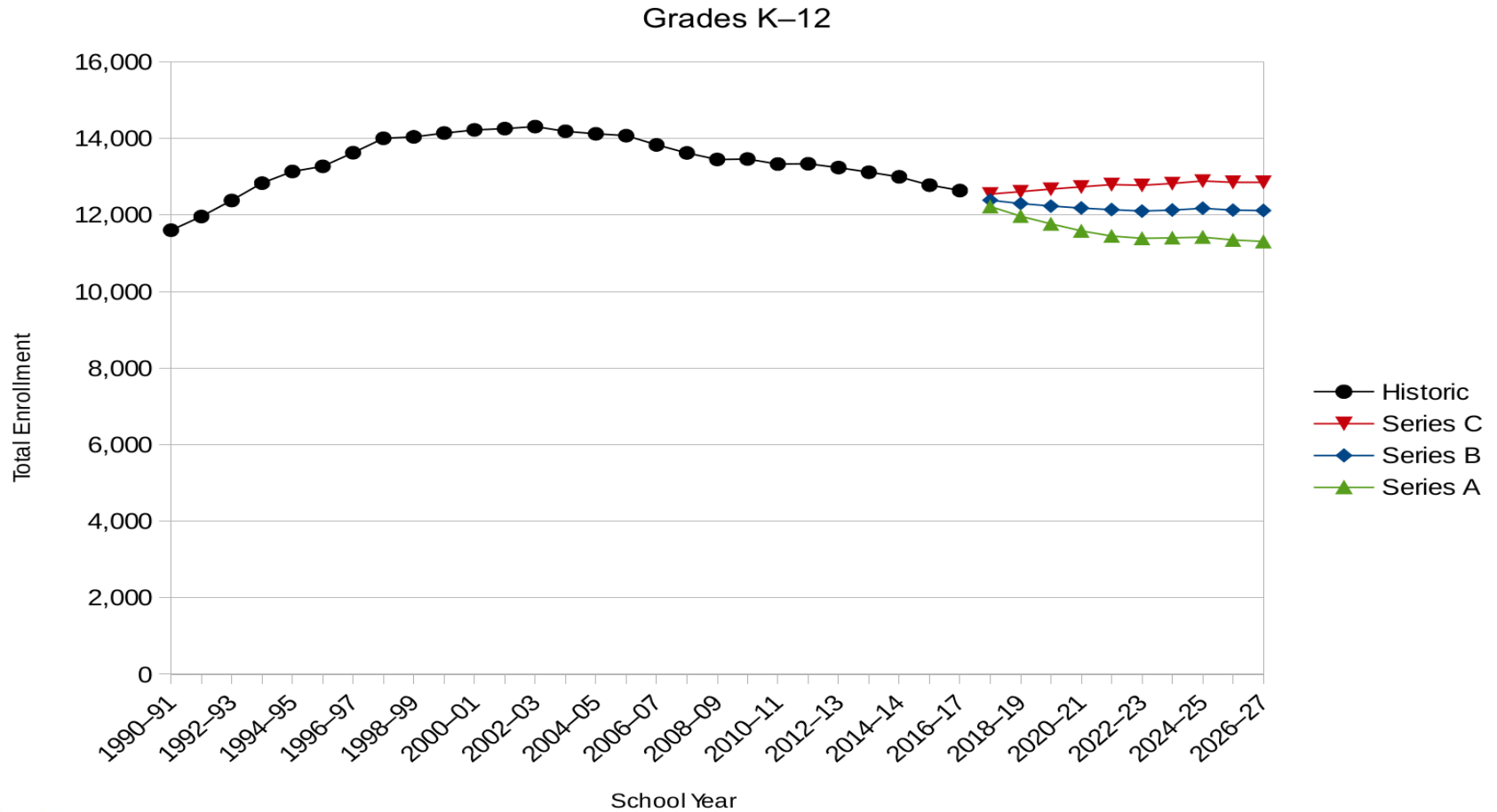


High School Utilization-80%

- **Wheaton North Utilization 2,202**
 - 2016-17 Enrollment of 2,084 Students (75%)
- **WW South Utilization 2,330**
 - 2016-17 Enrollment of 1,988 Students (68%)



District 200 Historical Total Enrollment 1990–91 to 2016–17 and Projected Total Enrollment 2017–18 to 2026–27 under Series A, Series B and Series C Assumptions Grades K–12



Conclusions

- Based on Series B data, enrollment district-wide should remain consistent
- Based on Series B data, capacity analysis indicates that all facilities are needed and appropriately utilized
- Special populations that do impact space through educational programming will continue to increase



Questions?

